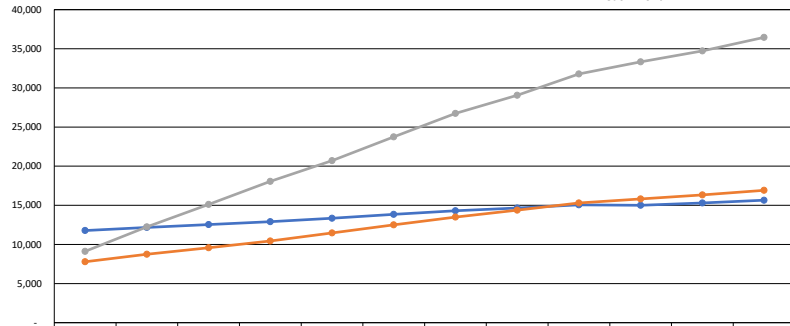


HBIA - HBIS Program - FY23 Dashboard Charts

The following FY23 data is an analysis completed by HFS for the following programs: Health Benefits for Immigrant Seniors 65+, Health Benefits for Immigrant Adults ages 55 - 64, and Health Benefits for Immigrant Adults ages 42 - 54. The purpose of this analysis is to present the programs' enrollment and liability data to stakeholders and the public in a more consumer-friendly way.

FY23 Monthly Enrollment by Program

*Enrollment as of the last day of each month

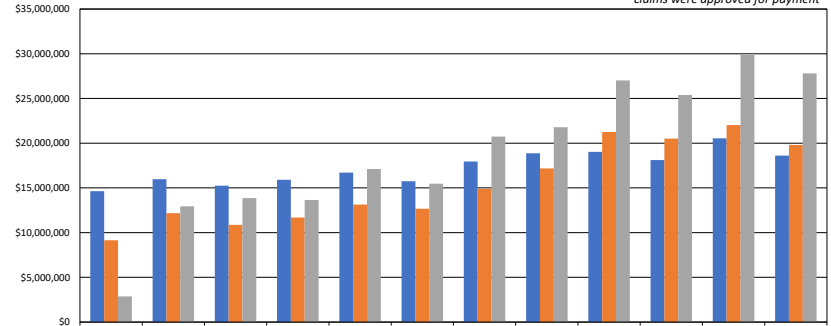


| | Jul-22 | Aug-22 | Sep-22 | Oct-22 | Nov-22 | Dec-22 | Jan-23 | Feb-23 | Mar-23 | Apr-23 | May-23 | Jun-23 |
|-------------|--------|--------|--------|--------|--------|--------|--------|--------|--------|--------|--------|--------|
| HBIS | 11,775 | 12,167 | 12,531 | 12,911 | 13,338 | 13,836 | 14,304 | 14,663 | 15,060 | 15,004 | 15,303 | 15,654 |
| HBIA: 55-64 | 7,785 | 8,741 | 9,574 | 10,444 | 11,462 | 12,497 | 13,491 | 14,376 | 15,301 | 15,819 | 16,321 | 16,915 |
| HBIA: 42-54 | 9,117 | 12,241 | 15,107 | 18,059 | 20,711 | 23,737 | 26,741 | 29,071 | 31,782 | 33,338 | 34,724 | 36,461 |

*PIT enrollment as of 10/10/23. Data will change depending on when it is refreshed
 *Enrollment as of the last day of each month

FY23 Monthly Cost by Program

*Liability reported in the month claims were approved for payment

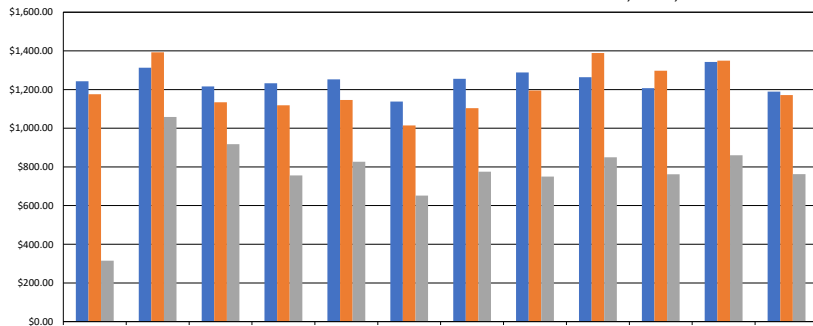


| | Jul-22 | Aug-22 | Sep-22 | Oct-22 | Nov-22 | Dec-22 | Jan-23 | Feb-23 | Mar-23 | Apr-23 | May-23 | Jun-23 |
|-------------|--------------|--------------|--------------|--------------|--------------|--------------|--------------|--------------|--------------|--------------|--------------|--------------|
| HBIS | \$14,633,091 | \$15,972,598 | \$15,241,605 | \$15,910,543 | \$16,711,183 | \$15,744,052 | \$17,956,210 | \$18,878,484 | \$19,035,795 | \$18,116,489 | \$20,552,108 | \$18,616,109 |
| HBIA: 55-64 | \$9,153,460 | \$12,171,863 | \$10,861,638 | \$11,682,491 | \$13,141,804 | \$12,674,655 | \$14,889,676 | \$17,186,513 | \$21,257,379 | \$20,519,726 | \$22,021,332 | \$19,810,173 |
| HBIA: 42-54 | \$2,869,905 | \$12,950,505 | \$13,863,644 | \$13,647,232 | \$17,119,856 | \$15,478,427 | \$20,736,220 | \$21,793,211 | \$27,018,246 | \$25,395,406 | \$29,871,104 | \$27,813,995 |

*Liability reported in the month claims were approved for payment by HFS (DCN date)

FY23 Avg. Monthly Cost Per Participant

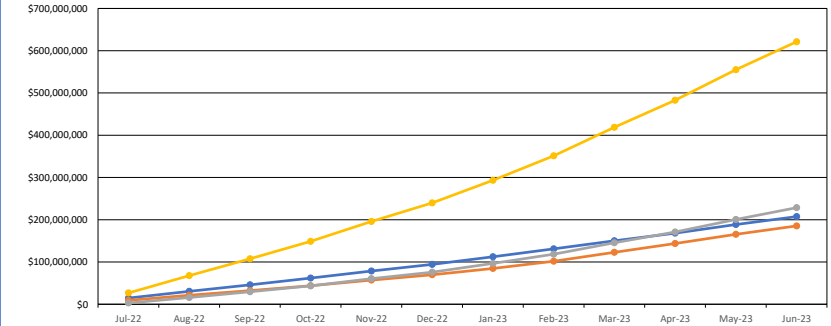
*Avg. monthly cost - monthly liability divided by monthly enrollment



| | Jul-22 | Aug-22 | Sep-22 | Oct-22 | Nov-22 | Dec-22 | Jan-23 | Feb-23 | Mar-23 | Apr-23 | May-23 | Jun-23 |
|-------------|------------|------------|------------|------------|------------|------------|------------|------------|------------|------------|------------|------------|
| HBIS | \$1,242.73 | \$1,312.78 | \$1,216.31 | \$1,232.32 | \$1,252.90 | \$1,137.90 | \$1,255.33 | \$1,288.37 | \$1,264.00 | \$1,207.44 | \$1,343.01 | \$1,189.22 |
| HBIA: 55-64 | \$1,175.78 | \$1,392.50 | \$1,134.49 | \$1,118.58 | \$1,146.55 | \$1,014.22 | \$1,103.67 | \$1,195.50 | \$1,389.28 | \$1,297.16 | \$1,349.26 | \$1,171.16 |
| HBIA: 42-54 | \$314.79 | \$1,057.96 | \$917.70 | \$755.70 | \$826.61 | \$652.08 | \$775.45 | \$749.65 | \$850.11 | \$761.76 | \$860.24 | \$762.84 |

*Liability reported in the month claims were approved for payment by HFS (DCN date)
 *avg. cost represents DCN date liability for the month divided by total enrollment for that month

FY23 Total Cost by Program



| | Jul-22 | Aug-22 | Sep-22 | Oct-22 | Nov-22 | Dec-22 | Jan-23 | Feb-23 | Mar-23 | Apr-23 | May-23 | Jun-23 |
|-------------|--------------|--------------|---------------|---------------|---------------|---------------|---------------|---------------|---------------|---------------|---------------|---------------|
| HBIS | \$14,633,091 | \$30,605,689 | \$45,847,293 | \$61,757,836 | \$78,469,019 | \$94,213,071 | \$112,169,283 | \$131,047,763 | \$150,083,560 | \$168,200,049 | \$188,752,157 | \$207,368,266 |
| HBIA: 55-64 | \$9,153,460 | \$21,325,323 | \$32,186,961 | \$43,869,452 | \$57,011,256 | \$69,685,911 | \$84,575,586 | \$101,762,100 | \$123,019,478 | \$143,539,204 | \$165,560,536 | \$185,370,708 |
| HBIA: 42-54 | \$2,869,905 | \$15,820,409 | \$29,684,053 | \$43,331,285 | \$60,451,141 | \$75,929,568 | \$96,665,788 | \$118,458,999 | \$145,477,246 | \$170,872,652 | \$200,743,756 | \$228,557,751 |
| Total | \$26,656,456 | \$67,751,421 | \$107,718,307 | \$148,958,573 | \$195,931,416 | \$239,828,550 | \$293,410,656 | \$351,268,862 | \$418,580,284 | \$482,611,904 | \$555,056,448 | \$621,296,724 |

*Displayed numbers are cumulative for the fiscal year through the listed month