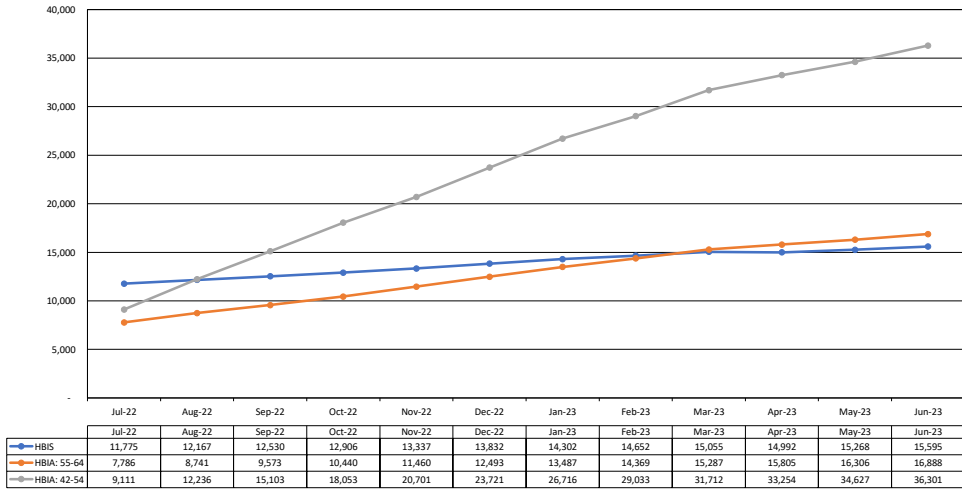


## HBIA - HBIS Program - FY23 Dashboard

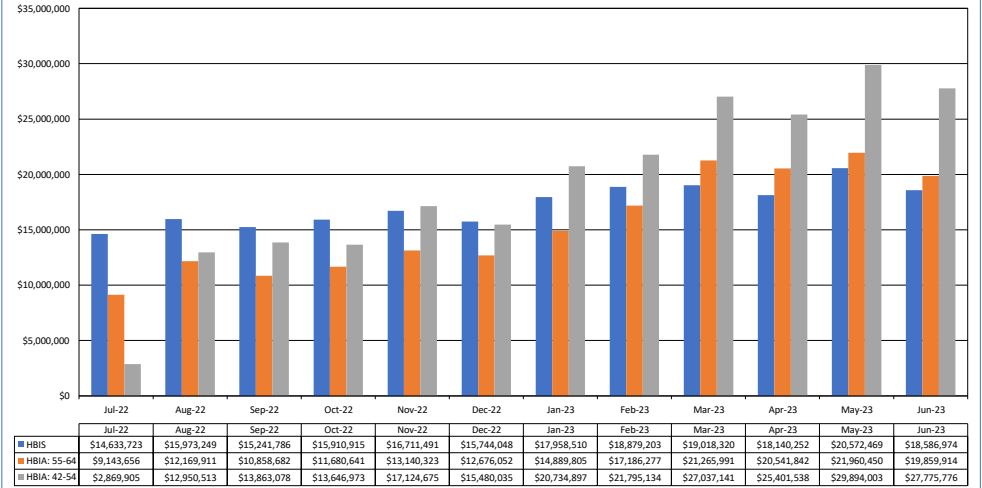
The following FY23 data is an analysis completed by HFS for the following programs: Health Benefits for Immigrant Seniors 65+, Health Benefits for Immigrant Adults ages 55 - 64, and Health Benefits for Immigrant Adults ages 42 - 54. The purpose of this analysis is to present the programs' enrollment and liability data to stakeholders and the public in a more consumer-friendly way.

**FY23 Monthly Enrollment by Program**



\*PIT enrollment as of 09/18/23. Data will change depending on when it is refreshed  
 \*Enrollment as of the last day of each month

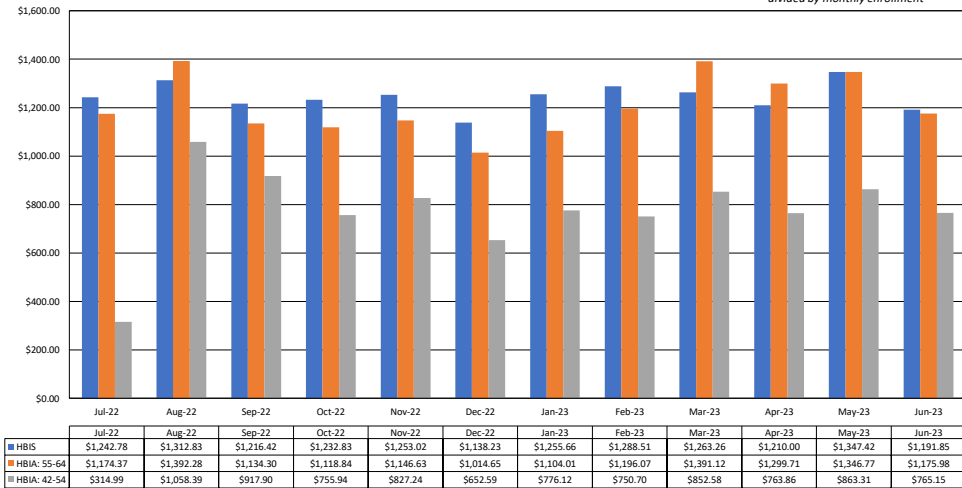
**FY23 Monthly Cost by Program**



\*Liability reported in the month claims were approved for payment by HFS

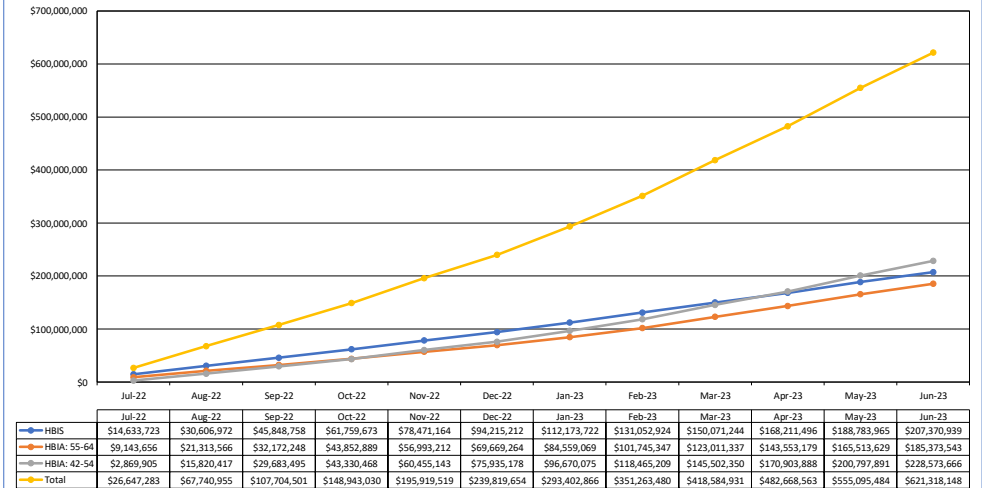
**FY23 Avg. Monthly Cost Per Participant**

\*Avg. monthly cost - monthly liability divided by monthly enrollment



\*Liability reported in the month claims were approved for payment by HFS (DCN date)  
 \*avg. cost represents DCN date liability for the month divided by total enrollment for that month

**FY23 Total Cost by Program**



\*Displayed numbers are cumulative for the fiscal year through the listed month